







-  (EN) Cashew Protein Rapid Kit
-  (FR) Kit Rapide Protéine Noix de cajou
-  (DE) Cashewnuss Protein Rapid Kit
-  (IT) Kit rapido per la rilevazione delle proteine di anacardo
-  (ES) Kit Rápido para Proteína de Nuez de Cajú (Anacardo)
-  (NL) Cashew Proteïne Sneltest
-  (SV) Cashew Protein Rapid Kit
-  (DA) Cashewnød Protein Rapid Kit
-  (NO) Cashewprotein hurtigkit
-  (PT) Kit Rápido para Proteína de Castanha de Caju
-  (EL) Κιτ Ταχείας Δοκιμασίας Πρωτεΐνης Κάσιου
-  (PL) Szybki test na wykrywanie białek orzechów nerkowca
-  (RU) Rapid набор (протеин кешью)
-  (TR) Kaju Proteini Hızlı Test Kiti
-  (JA) カシュープロテイン迅速測定キット
-  (ZH) 腰果蛋白快速检测试剂盒
-  (TH) ชุดทดสอบโปรตีนของมะม่วงหิมพานต์แบบรวดเร็ว
-  (KO) 캐슈 단백질 신속 키트
-  (ID) Rapid Kit Protein Mete
-  (AR) إرشادات المنتج

**key**diagnostics

T: 02 8212 4074 F: 02 9423 6992

info@keydiagnostics.com.au

www.keydiagnostics.com.au

PO Box 1038, Gymea, NSW, 2227

# Product Instructions

## Cashew Protein Rapid Kit

Lateral Flow Devices (LFD) for qualitative analysis of cashew proteins.

### Product Description and Intended Use

The 3M™ Cashew Protein Rapid Kit is intended for screening for the presence of cashew proteins in clean-in-place (CIP) final rinse water, environmental swab samples, food ingredients and processed food products.

The 3M Cashew Protein Rapid Kit utilizes a lateral flow device (LFD) that is an immunochromatographic test method utilizing antibodies which are specific for the detection of cashew proteins. Positive results are visualized by the presence of three lines: a control line, a hook line and a test line, when the cashew protein is present in the range of concentrations from a lower level of 2 ppm and a higher level of approximately 10 mg/mL of cashew protein in saline solution (0.9% sodium chloride). These limits may vary depending on the matrix tested. Samples containing more than 10% cashew may result in an invalid test which will result in the absence of the hook line and/or test line.

The 3M Cashew Protein Rapid Kit is intended for use in the food and beverage industry by trained personnel. 3M has not documented the use of this product in industries other than food or beverage. For example, 3M has not documented this product for testing pharmaceutical, cosmetic, clinical or veterinary samples. The 3M Cashew Protein Rapid Kit has not been evaluated with all possible food products, food processes and testing protocols.

3M Cashew Protein Rapid Kit contains 25 tests, described in Table 1.

**Table 1.** Kit components

Item	Identification	Quantity	Storage
3M™ Cashew Protein Lateral Flow Device (LFD)	Lateral flow device in a plastic cassette	25 devices individually packed.	Store at 2-8°C. Do not freeze.
3M™ Extraction Buffer	Bottle with Extraction Buffer	1 bottle with 50 mL	Store at 2-8°C. Do not freeze.
Dilution Tubes	Microcentrifuge tube (2.2 mL volume capacity)	26 tubes	Store in a clean dry place.

Materials not provided in the kit:

- a. Swabs and pipettes.
- b. The use of vortex, timer and balance are recommended but not required for all samples.
- c. The use of a centrifuge is required for all chocolate and gum samples and it is recommended, but not required for all solid samples.

### Safety

The user should read, understand, and follow all safety information in the instructions for the 3M Cashew Protein Rapid Kit. Retain the safety instructions for future reference.

**⚠ WARNING:** Indicates a hazardous situation, which, if not avoided, could result in death or serious injury and/or property damage.

**NOTICE:** Indicates a potentially hazardous situation, which, if not avoided, could result in property damage.

### ⚠ WARNING

**To reduce the risks associated with inaccurate results:**

- 3M has not documented the use of 3M Cashew Protein Rapid Kit in industries other than food or beverage. For example, 3M has not documented this product for testing pharmaceutical, cosmetic, clinical or veterinary samples.
- 3M Cashew Protein LFD should be read 11 ± 1 minutes after sample has been loaded on the lateral flow device.
- The 3M Extraction Buffer is designated for use with a specific lot of 3M Cashew Protein LFD. Do NOT interchange 3M Cashew Protein Rapid Kit components with other lots or kits.
- The 3M Extraction Buffer is designated for use with a specific lot of 3M Cashew Protein LFD. Dispose of any remaining 3M Extraction Buffer once all 3M Cashew Protein Lateral Flow Devices have been used.



- Store the 3M Cashew Protein Rapid Kit as indicated on the package and in the product instructions.
- Always use the 3M Cashew Protein Rapid Kit by the expiration date.
- Always use the 3M Cashew Protein Rapid Kit at 20-25°C temperature.
- 3M™ Allergen Protein Testing Kits are not intended for the detection of hydrolyzed proteins.

**To reduce the risks associated to false negative results:**

- Use the 3M Cashew Protein Rapid Kit for food and environmental samples that have been validated internally or by a third party.

**To reduce the risks associated with exposure to chemicals:**

- 3M Cashew Protein Rapid Kit is intended for use in the food and beverage industries by trained personnel.

**NOTICE****To reduce the risks of inaccurate results:**

- Refer to the Interpretation of Results section of the product instructions, to ensure accurate interpretation of the 3M Cashew Protein LFD.

Consult the Safety Data Sheet for additional information.

For information on documentation of product performance, visit our website at [www.3M.com/foodsafety](http://www.3M.com/foodsafety) or contact your local 3M representative or distributor.

**User Responsibility**

Users are responsible for familiarizing themselves with product instructions and information. Visit our website at [www.3M.com/foodsafety](http://www.3M.com/foodsafety), or contact your local 3M representative or distributor for more information.

**As with all test methods used for food analysis the test matrix can influence the results.** When selecting a test method, it is important to recognize that external factors such as sampling methods, testing protocols, sample preparation, handling, and laboratory technique may influence results. The food sample itself may influence results.

It is the user's responsibility in selecting any test method or product to evaluate a sufficient number of samples to satisfy the user that the chosen test method meets the user's criteria.

It is also the user's responsibility to determine that any test methods and results meet its customers' and suppliers' requirements.

As with any test method, results obtained from use of any 3M Food Safety product do not constitute a guarantee of the quality of the matrices or processes tested.

**Limitation of Warranties/Limited Remedy**

EXCEPT AS EXPRESSLY STATED IN A LIMITED WARRANTY SECTION OF INDIVIDUAL PRODUCT PACKAGING, 3M DISCLAIMS ALL EXPRESS AND IMPLIED WARRANTIES, INCLUDING BUT NOT LIMITED TO, ANY WARRANTIES OF MERCHANTABILITY OR FITNESS FOR A PARTICULAR USE. If any 3M Food Safety Product is defective, 3M or its authorized distributor will, at its option, replace or refund the purchase price of the product. These are your exclusive remedies. You must promptly notify 3M within sixty days of discovery of any suspected defects in a product and return it to 3M. Please call Customer Service (1-800-328-1671 in the U.S.) or your official 3M Food Safety representative for a Returned Goods Authorization.

**Limitation of 3M Liability**

3M WILL NOT BE LIABLE FOR ANY LOSS OR DAMAGES, WHETHER DIRECT, INDIRECT, SPECIAL, INCIDENTAL OR CONSEQUENTIAL DAMAGES, INCLUDING BUT NOT LIMITED TO LOST PROFITS. In no event shall 3M's liability under any legal theory exceed the purchase price of the product alleged to be defective.

**Storage and Disposal**

Store all 3M Cashew Protein Rapid Kit components at 2-8°C.

3M Cashew Protein Rapid Kit components should not be frozen, exposed to UV light or exposed to prolonged heat (>30°C).

3M Cashew Protein Rapid Kit components should not be used past the expiration date. Expiration date and lot number are noted on the outside label of the box.

**Please note that each 3M Extraction Buffer lot is validated specifically for each LFD lot and is not interchangeable with any other lots or kits.**

Dispose according to current local/regional/industry standards and regulations.

## Instructions for Use

Follow all instructions carefully. Failure to do so may lead to inaccurate results. Ensure that all 3M Cashew Protein Rapid Kit components are at ambient temperature (20-25°C) prior to use.

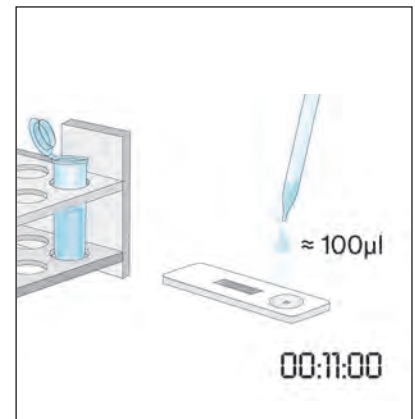
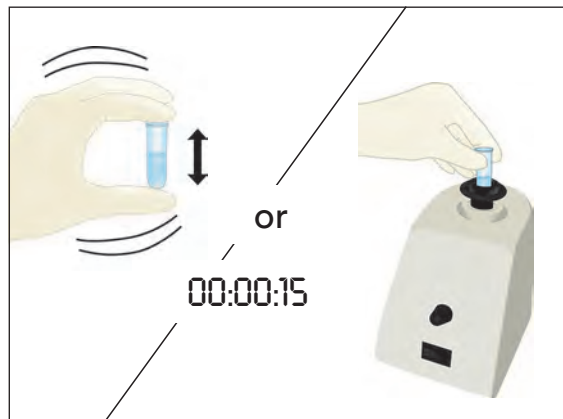
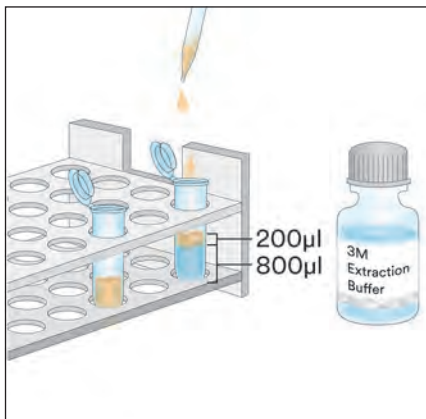
### Sample Analysis

#### 1. CIP Final Rinse Water Samples

- 1.1 Label one microcentrifuge tube for each CIP sample.
- 1.2 Add 800  $\mu$ L of 3M Extraction Buffer to a labeled microcentrifuge tube.
- 1.3 Add 200  $\mu$ L of CIP final rinse water sample. Shake vigorously or vortex for 15 seconds to mix thoroughly to obtain an extracted sample.

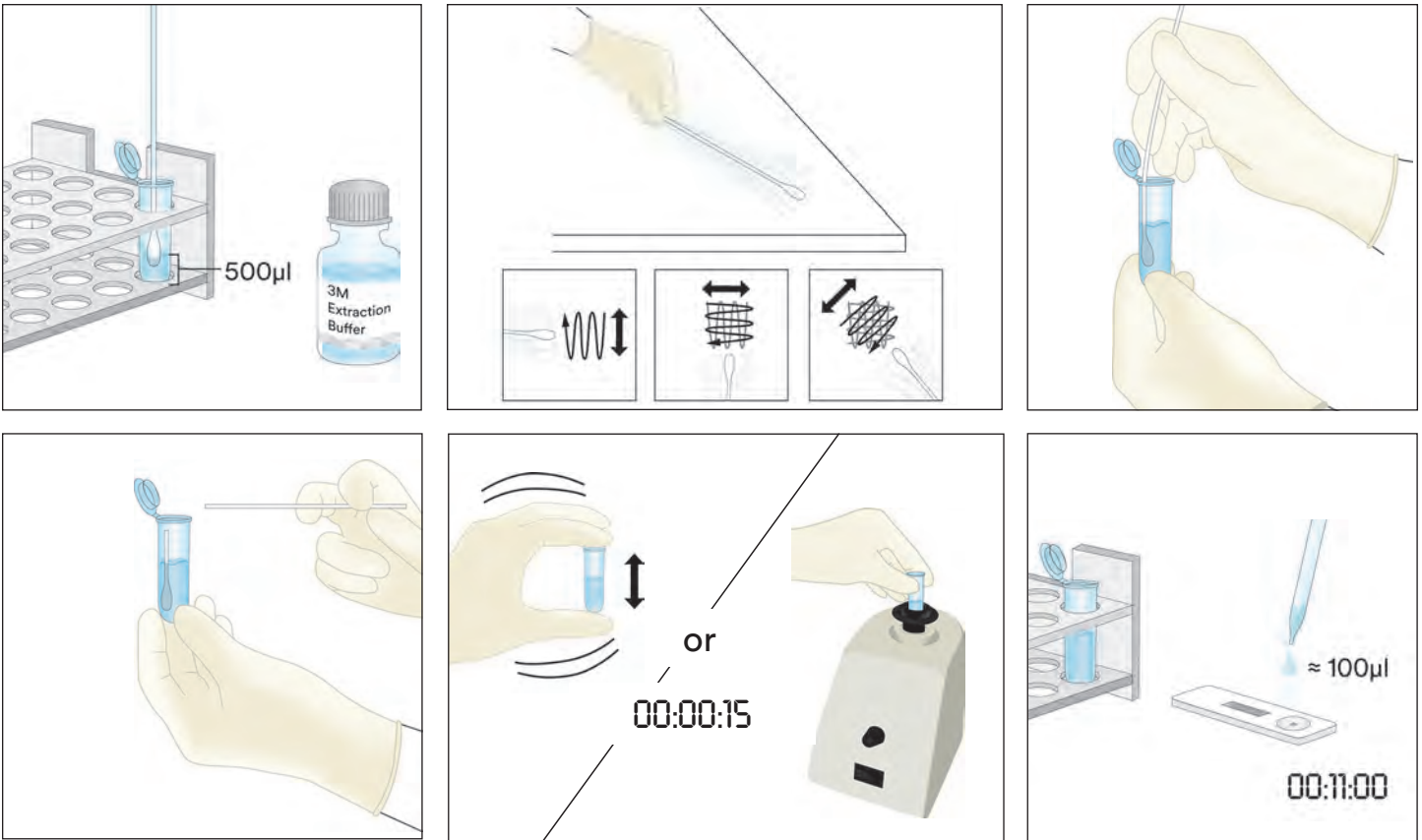
Note: The pH of extracted sample should be between 5 and 10. Proceed to Troubleshooting section for additional information.

- 1.4 Remove one 3M Cashew Protein LFD from package and place on a clean, dry, flat surface.
- 1.5 Transfer 100  $\mu$ L of the extracted sample prepared in 1.3 using a clean pipette or pipette tip and apply it to the sample well on the 3M Cashew Protein LFD. Start the timer for  $11 \pm 1$  minutes. Proceed to Interpretation of Results section.



#### 2. Environmental Swab Samples

- 2.1 Label one microcentrifuge tube for each Environmental Swab Sample.
- 2.2 Add 500  $\mu$ L of 3M Extraction Buffer into a labeled microcentrifuge tube.
- 2.3 Take a clean swab and dip the entire tip into the microcentrifuge tube wetting the tip with 3M Extraction Buffer. Gently express excess liquid from tip by pressing swab tip lightly on the inside of the tube.
- 2.4 Take wetted swab and survey a 10 X 10 cm surface area maintaining the swab at a 30° angle with the surface. Rub the swab slowly and thoroughly over the surface area. Rub the swab three times over this surface, reversing direction between alternating strokes.
- 2.5 Take swab and insert it back into the pre-labeled tube and swirl swab several times to release any residues that might be on the surface of swab into the 3M Extraction Buffer. Break off swab tip in tube, cap tightly and mix well to obtain an extracted sample.
- 2.6 Remove one 3M Cashew Protein LFD from the package and place on a clean, dry, flat surface.
- 2.7 Transfer 100  $\mu$ L of the extracted sample prepared in 2.5 using a clean pipette or pipette tip and apply it to the sample well on the 3M Cashew Protein LFD. Start the timer for  $11 \pm 1$  minutes. Proceed to Interpretation of Results section.

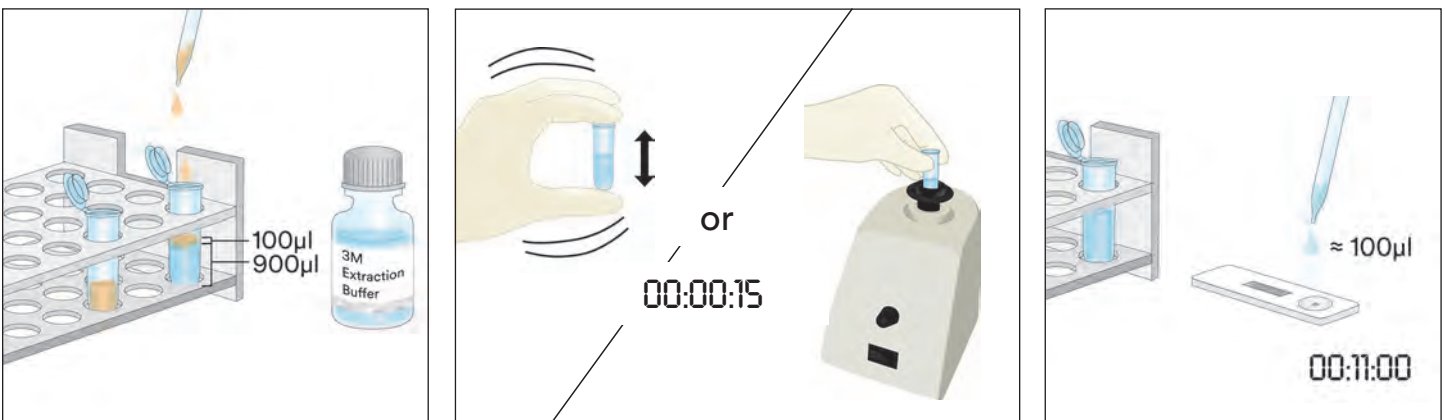


### 3. Liquid Samples Except Liquid Chocolate Samples

- 3.1 Label one microcentrifuge tube for each Liquid sample.
- 3.2 Measure 900 µL of 3M Extraction Buffer into a labeled microcentrifuge tube.
- 3.3 Add 100 µL of a well-mixed sample. Shake vigorously or vortex for 15 seconds to mix thoroughly to obtain an extracted sample.

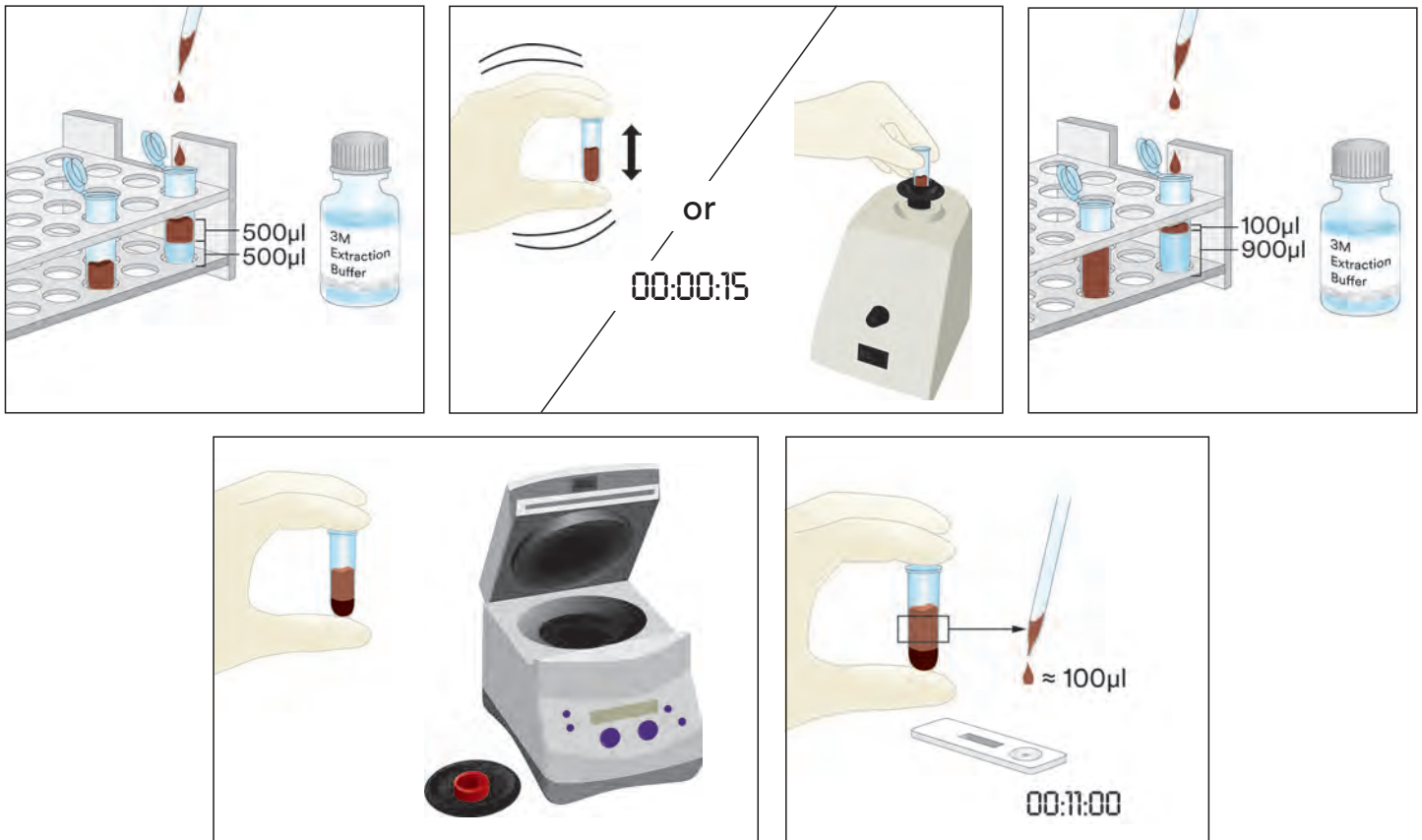
Note: The pH of extracted sample should be between 5 and 10. Proceed to Troubleshooting section for additional information.

- 3.4 Remove one 3M Cashew Protein LFD from package and place on a clean, dry, flat surface.
- 3.5 Transfer 100 µL of the extracted sample prepared in 3.3 from the middle (aqueous) layer using a clean pipette or pipette tip and apply it to the sample well on the 3M Cashew Protein LFD. Start the timer for 11 ± 1 minutes. Proceed to Interpretation of Results section.



#### 4. Liquid Chocolate Samples

- 4.1 Label two microcentrifuge tubes for each Liquid Chocolate Sample.
- 4.2 To make a prepared sample, add 500  $\mu\text{L}$  of a well-mixed Liquid Chocolate Sample and add 500  $\mu\text{L}$  of 3M Extraction Buffer into one labeled microcentrifuge tube and shake vigorously to mix thoroughly or vortex for approximately 15 seconds.
- 4.3 Add 900  $\mu\text{L}$  of 3M Extraction Buffer into the second labeled microcentrifuge tube and add 100  $\mu\text{L}$  of the Prepared Sample from step 4.2. Shake vigorously to mix thoroughly or vortex for approximately 15 seconds.
- 4.4 Centrifuge for 20-30 seconds at 5000-7000 rpm (3000 x g). The supernatant is the extracted sample.
- 4.5 Remove one 3M Cashew Protein LFD from package and place on a clean, dry, flat surface.
- 4.6 Transfer 100  $\mu\text{L}$  of the extracted sample prepared in 4.4 from the middle (aqueous) layer using a clean pipette or pipette tip and apply it to the sample well on the 3M Cashew Protein LFD. Start the timer for  $11 \pm 1$  minutes. Proceed to Interpretation of Results section.



#### 5. Solid Samples

- 5.1 Label one microcentrifuge tube for each non-liquid sample.
- 5.2 Grind sample into a fine homogeneous powder.
- 5.3 Measure 0.2 g of sample into a labeled microcentrifuge tube.
- 5.4 Add 1.8 mL of the 3M Extraction Buffer to the sample in the microcentrifuge tube. Shake vigorously or vortex for 15 seconds to mix thoroughly to obtain an extracted sample.  
Note: Melt chocolate samples.
- 5.5 Centrifuge for 20-30 seconds at 5000-7000 rpm (3000 x g). The supernatant is the extracted sample.
- 5.6 Remove one 3M Cashew Protein LFD from package and place on a clean, dry, flat surface.
- 5.7 Transfer 100  $\mu\text{L}$  of the extracted sample prepared in 5.5 from the middle (aqueous) layer using a clean pipette or pipette tip and apply it to the sample well on the 3M Cashew Protein LFD. Start the timer for  $11 \pm 1$  minutes. Proceed to Interpretation of Results section.

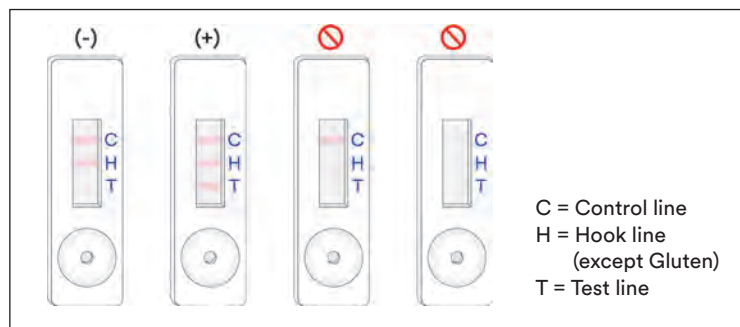


### Interpretation of Results

The control line is next to the letter C on the 3M Cashew Protein LFD. The test line is next to the letter T on the 3M Cashew Protein LFD. The hook line is next to the letter H and/or in between the T and C lines. Note: Some LFD cassettes might not have an H marking on the side of the plastic cassette.

Read LFD at  $11 \pm 1$  minutes after application of the sample. A sample is considered to be:

- Negative for cashew protein when only the two lines furthest from the well, the control and the hook line, are visible on the 3M Cashew Protein LFD.
- Positive for cashew protein when all three lines (test, hook and control line) are visible on 3M Cashew Protein LFD.
- Invalid, if the 3M Cashew Protein LFD does not develop the middle hook line. The sample may be overloaded with cashew protein and needs to be diluted.
- Invalid, if the 3M Cashew Protein LFD does not develop the control line.



Any reading after 12 minutes from the initial application of the sample into the 3M Cashew Protein LFD should be considered invalid. A reading at this time cannot be interpreted and can lead to erroneous results.



## Troubleshooting

1. Sample fails to migrate across the strip within the first 5 minutes after application of the sample in the 3M Cashew Protein LFD.  
The sample may be too viscous and needs to be centrifuged if this was not already done during the preparation of the sample. If sample was already centrifuged, then preparing a 1:1 dilution with the 3M Extraction Buffer may be necessary. (Note: This may reduce the sensitivity to ~6 ppm for some matrices.)
2. A red dot appears on the test line but remainder of test line does not change color.  
Sample particulate may have passed around the filter in the cassette, simply re-run the sample by taking a new 3M Cashew Protein LFD from the kit and repeat the test.
3. The pH of extracted sample should be between 5 and 10. If pH is outside this range, further dilution may be required (i.e., prepare a 1:1 dilution with 100 µL of the extracted sample and 100 µL of 3M Extraction Buffer. This may reduce the sensitivity to ~6 ppm for some matrices.)

If you have questions about specific applications or procedures, please contact your 3M Food Safety representative or distributor.

## Minimum Performance Characteristics

Lowest Limit of Detection <sup>(a)</sup>	2 ppm
Upper Limit of Detection	10 mg/mL

- <sup>(a)</sup> The lowest limit of detection is defined as the lowest concentration of the allergen in a test sample that can be distinguished from a true blank sample at a specified probability level!

## References

1. Abbott, M., Hayward, S., Ross, W., Godefroy, S.B., Ulberth, F., Van Hengel, A. J., Roberts, J., Akiyama, H., Popping, B., Yeung, J.M., Wehling, P., Taylor, S., Poms, R.E., and Delahaut, P. (2010). Appendix M: Validation Procedures for Quantitative Food Allergen ELISA Methods: Community Guidance and Best Practices. *J. AOAC Int.* 93, 442-450.

## Explanation of Symbols

[www.3M.com/foodsafety/symbols](http://www.3M.com/foodsafety/symbols)



## 3M Food Safety

### 3M United States

3M Center  
Bldg. 275-5W-05  
St. Paul, MN 55144-1000  
USA  
1-800-328-6553

### 3M Canada

Post Office Box 5757  
London, Ontario N6A 4T1  
Canada  
1-800-563-2921

### 3M Latin America

3M Center  
Bldg. 275-5W-05  
St. Paul, MN 55144-1000  
USA  
1-954-340-8263

### 3M Europe and MEA

3M Deutschland GmbH  
Carl-Schurz-Strasse 1  
D41453 Neuss/Germany  
+49-2131-14-3000

### 3M United Kingdom PLC

Morley Street,  
Loughborough  
Leicestershire  
LE11 1EP  
United Kingdom  
+(44) 1509 611 611

### 3M Österreich GmbH

Euro Plaza  
Gebäude J, A-1120 Wien  
Kranichberggasse 4  
Austria  
+(43) 1 86 686-0

### 3M Asia Pacific

No 1, Yishun Avenue 7  
Singapore, 768923  
65-64508869

### 3M Japan

3M Health Care Limited  
6-7-29, Kita-Shinagawa  
Shinagawa-ku, Tokyo  
141-8684 Japan  
81-570-011-321

### 3M Australia

Bldg A, 1 Rivett Road  
North Ryde, NSW 2113  
Australia  
61 1300 363 878



### 3M Health Care

2510 Conway Ave  
St. Paul, MN 55144 USA  
[www.3M.com/foodsafety](http://www.3M.com/foodsafety)

© 2019, 3M. All rights reserved.  
3M is a trademark of 3M. Used under license in Canada.  
34-8723-6580-3