



## CROSS CHECK | Acid Phosphatase

CrossCheck is a rapid bioluminogenic test for the determination of Acid Phosphatase (ACP) activity. CrossCheck can quickly gauge whether surfaces and utensils, even those that appear visibly clean, retain potentially hazardous uncooked residue. CrossCheck can also be used directly on cooked products to verify thermal processing and food contact surfaces to measure raw meat residues and cross contamination hazards.

### Benefits:

- Results in 2-5 minutes
- 2 minute quick-test or 5 minute enhanced sensitivity test methods
- Liquid -stable chemistry eliminates the need to reconstitute a pellet, giving more accurate results with less variation
- Unique patented Snap-Valve™ design reduces user variation
- Pre-wetted swab breaks through biofilm and aids in sample collection
- Environmentally conscious design uses 50% less plastic than other tests
- Test devices are 100% recyclable
- 12 month shelf life at refrigerated temperatures (2°C -8°C)

### Sensitivity:

- Detects to 0.1% or less of raw meat or fish
- Optional incubation for enhanced sensitivity

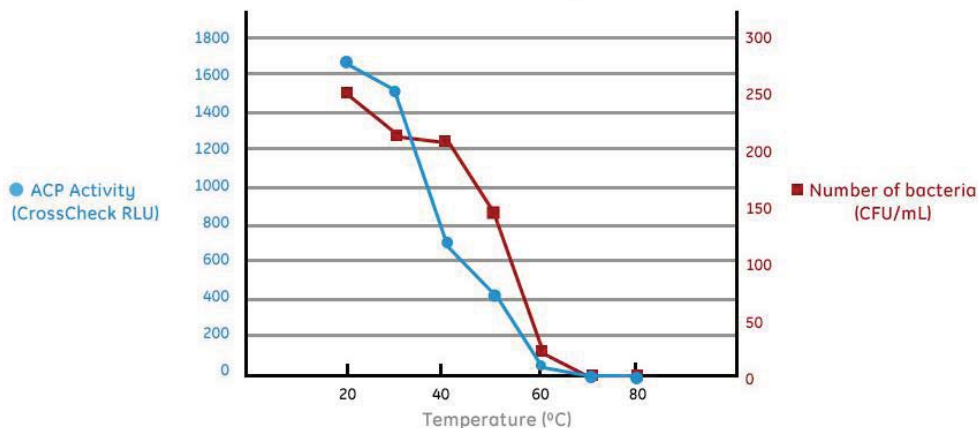


Find support documents, instructional videos, and more at [www.hygiene.com](http://www.hygiene.com)



Tel : 02 8212 4074  
 Fax: 02 9423 6992  
 PO Box 1038  
 Gympie NSW 2227  
[info@keydiagnostics.com.au](mailto:info@keydiagnostics.com.au)  
[www.keydiagnostics.com.au](http://www.keydiagnostics.com.au)

### Cooking Inactivates Acid Phosphatase & Bacteria

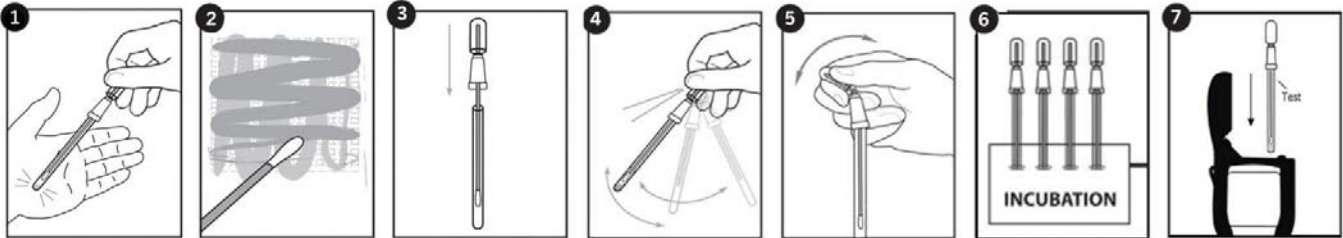


Catalog No.	Description	Quantity
CX-3000	CrossCheck Acid Phosphatase Detection Test	100

REV 112013

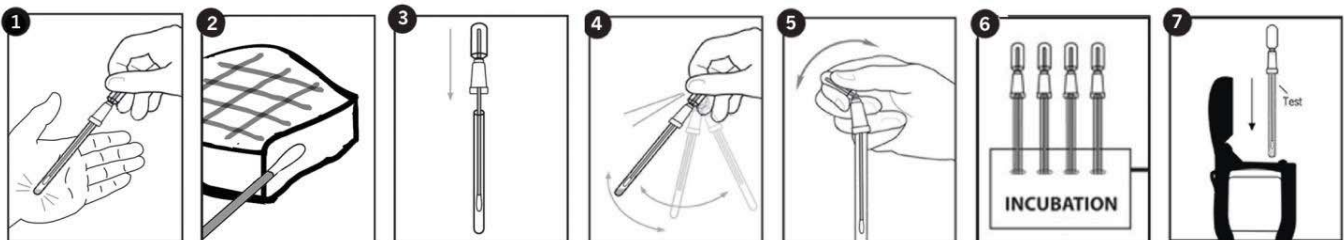
### CrossCheck Procedure:

For surface samples: Swab a 10x10 cm (4x4 in) area.



For product samples:

Slice a cooked sample and swab inside. To reduce variability, use consistent sampling technique when collecting samples.



### Related Products:



#### EnSURE

EnSURE is a high-sensitivity luminometer that measures multiple quality tests such as ATP, TVC, Coliform, *E. coli*, and more all on one system. The system includes SureTrend data tracking software to record, trend and analyze test results.



#### UltraSnap

UltraSnap measures Adenosine Triphosphate (ATP) found on surfaces. ATP is found in organic matter from all living organisms and should be significantly reduced after cleaning. Monitoring ATP provides an instant and objective measurement of cleaning efficiency.



#### ProClean

ProClean detects protein residues left on a surface after cleaning, delivering results in 1-10 minutes with no required instrumentation. If protein residue is present, the reagent will turn purple.



#### MicroSnap Indicator Organisms Tests

MicroSnap is a rapid test platform for detection and enumeration of specific bacteria. Single figure organisms can be detected in 8 hours or less, delivering results in the same working day or shift. MicroSnap is available in four formats: Coliform, *E. coli*, TVC, and Enterobacteriaceae.

Catalog No.	Description	Quantity
ENSURE	EnSURE Monitoring System with SureTrend Software	1
US2020	UltraSnap Surface ATP Swab	100
PRO-100	PRO-Clean Protein Residue Detection	100
See catalog	MicroSnap: TVC, Coliform, and <i>E. coli</i>	-