



Q-Swab™ | Environmental Sample Collection

Q-Swab is a ready-to-use sample collection and delivery device for environmental surface sampling. Money and time are saved by eliminating pipettes and broth preparation required with other sample collection methods. Each of the broths offered in Q-Swab are self-contained, gamma irradiated and held away from the swab by utilizing patented Snap-Valve technology. When the Snap-Valve is snapped, broth is released down the swab shaft, neutralizing residual sanitizers and facilitating recovery of bacteria. The sample is then ready to be poured onto dehydrated media film or streaked onto agar plates for culturing. Q-Swab can be used either wet or dry to sample environmental surfaces. Simply swab, snap and squeeze, and a sample is ready.

Benefits:

- Ready-to-use and convenient
- All-in-one sample collection system
- Rehydrates 1 dried media film perfectly
- Neutralizes residual sanitizers remaining on surface
- 100% recyclable plastic
- Available broths: Letheen & Buffered Peptone Water
- 18 month shelf life at refrigerated temperatures (2-8°C)



YouTube [youtube.com/HygienaTV](https://www.youtube.com/HygienaTV)

Watch an instructional demo at [youtube.com/HygienaTV](https://www.youtube.com/HygienaTV)



Find support documents, instructional videos, and more at www.hygiena.com

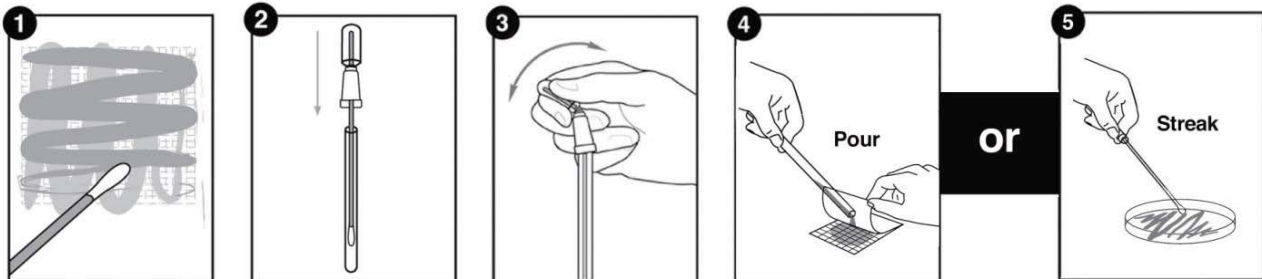


KEY

diagnostics

Tel : 02 8212 4074
 Fax: 02 9423 6692
www.keydiagnostics.com.au
 PO Box 1038 Gymea NSW 2227

Catalog No.	Description	Quantity
QS1200	Q-Swab Sample Collection Device, 1.0mL, Letheen Broth	250
QS1000	Q-Swab Sample Collection Device, 1.0mL, Letheen Buffered Peptone Water	250

Q-Swab Procedure:

Related Products:

Sponge'n Bag

Hygiena Sponge'n Bags are biocide-free cellulose sponges supplied in a sterile, leak-proof, tie-off bag, providing a simple and convenient device for collecting environmental samples from large surface areas.


Stick Sponge

Hygiena Stick Sponges are biocide-free cellulose sponges attached to a plastic handle and supplied in a sterile, leak-proof, tie-off bag. Sponges are pre-moistened and available in a variety of different diluents.


Transport Swab

Transport Swab is an easy-to-use environmental surface sample collection device for larger dilutions. Screw cap tubes are filled with either 4 ml or 10 ml diluents with a polyester swab securely attached to the cap. Transport Swab rehydrates several parts without additional dilution and sample preparation.


QD-Loop

QD-Loop is an all-in-one rapid dilution device for accurate and convenient dilutions. A calibrated loop is attached to a reservoir where the Snap-Valve holds up to 1.0 ml of Butterfields or Maximum Recovery Diluent (MRD) buffer.

Catalog No.	Description	Quantity
See catalog	Sponge'n Bag	100
See catalog	Stick Sponge	100
See catalog	Transport Swab	100
See catalog	QD-Loop	100